



**India Meteorological Department
(Ministry of Earth Sciences)**

HOURLY UPDATE ON SEVERE CYCLONIC STORM “DANA”

BULLETIN NO. 3

DATE: 24-10-2024

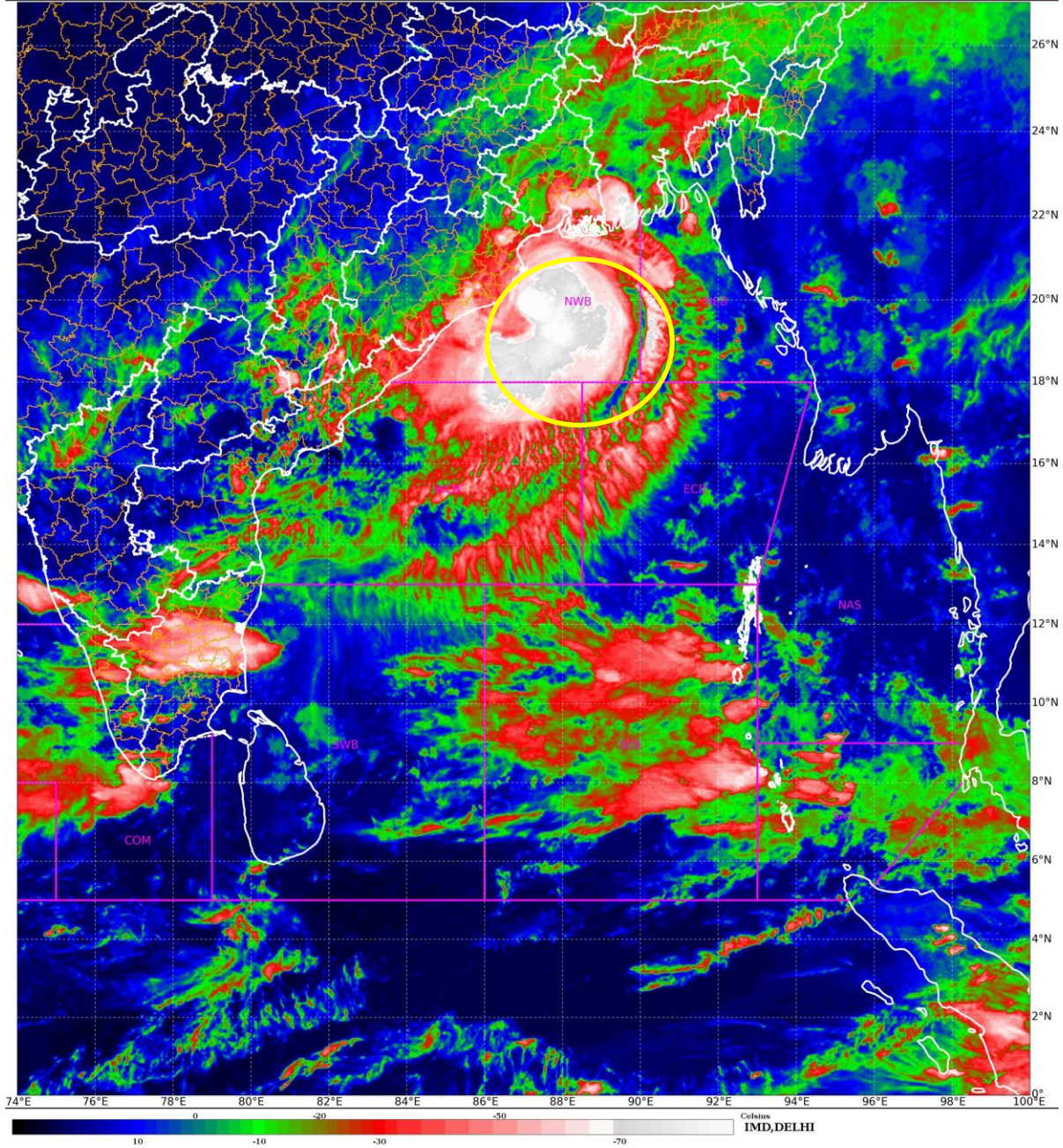
TIME OF ISSUE 2100 HRS IST

| DATE/TIME (IST) OF OBSERVATION | BASED ON 24-10-2024 (1930 HRS IST) |
|---|--|
| LOCATION LATITUDE/LONGITUDE | THE SEVERE CYCLONIC STORM “DANA” (PRONOUNCED AS DANA) OVER NORTHWEST BAY OF BENGAL MOVED NORTH-NORTHWESTWARDS WITH A SPEED OF 13 KMPH DURING PAST 6 HOURS AND LAY CENTRED AT 1930 HRS IST OF TODAY, THE 24TH OCTOBER, OVER THE SAME REGION, NEAR LATITUDE 19.95° N AND LONGITUDE 87.35°E, ABOUT 80 KM EAST-SOUTHEAST OF PARADIP (ODISHA), 110 KM SOUTH-SOUTHEAST OF DHAMARA (ODISHA) AND 200 KM SOUTH-SOUTHWEST OF SAGAR ISLAND (WEST BENGAL). |
| CURRENT INTENSITY WIND SPEED | SEVERE CYCLONIC STORM 105-115 KMPH GUSTING TO 125 KMPH |
| FORECAST | IT IS VERY LIKELY TO MOVE NORTH-NORTHWESTWARDS AND CROSS NORTH ODISHA AND WEST BENGAL COASTS BETWEEN PURI AND SAGAR ISLAND CLOSE TO BHITARKANIKA AND DHAMARA (ODISHA) DURING MID-NIGHT OF 24TH TO MORNING OF 25TH OCTOBER, 2024 AS A SEVERE CYCLONIC STORM WITH A WIND SPEED OF 100-110 KMPH GUSTING 120 KMPH. |
| OBSERVED RAINFALL FROM 0830 HRS IST TO 1930 HRS IST (0300-1400 UTC) OF 24 TH OCT. (mm) | BHUBANESWAR-15.1, BALASORE-15.6, CHANDBALI-27.6, PARADIP-29.2, HALDIA-23.0, DIGHA-24.0 |
| OBSERVED WINDSPEED AT 1930 HRS IST (1400 UTC) OF 05 TH DEC. (KNOTS) | PARADIP- 11KT/ NNWLY, BHUBANESWAR-08 KT/ NNWLY, BALASORE-08 KT/NNELY, CANNING & DUMDUM 08 & 10 KT/NELY |

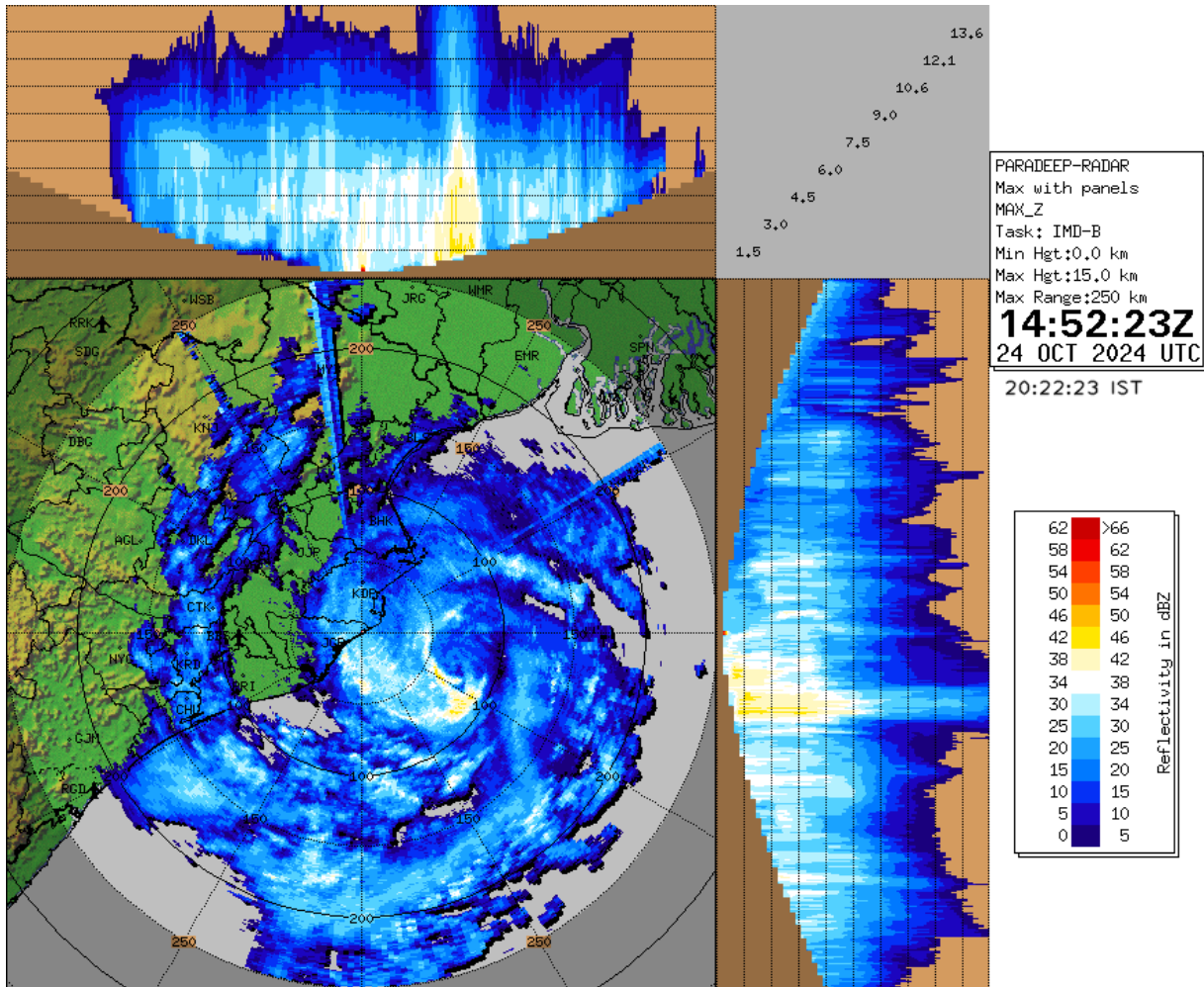
SATELLITE IMAGERY

SAT : INSAT-3DR IMG
IMG_TIR1_TEMP 10.8 um
LIC Mercator

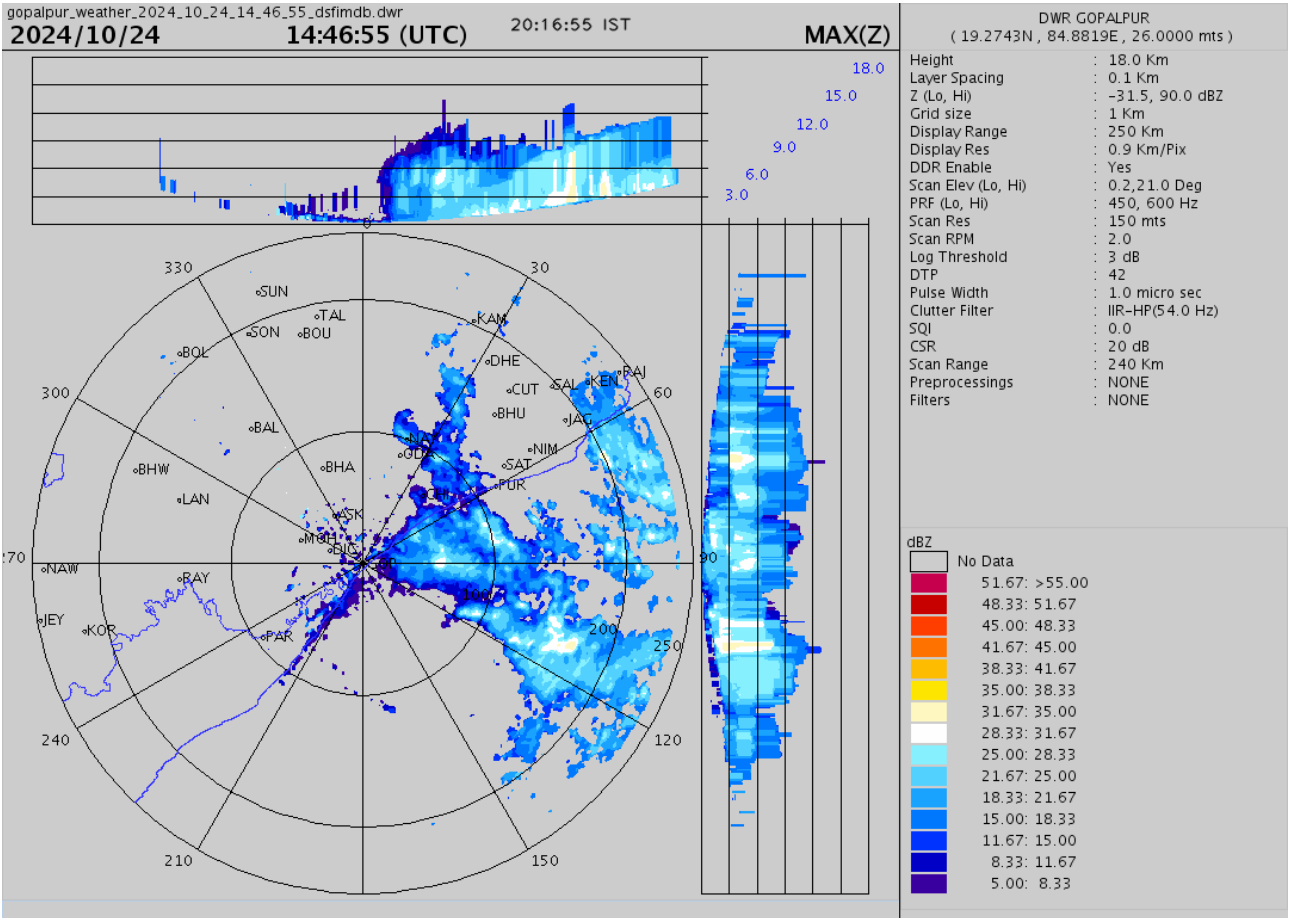
24-10-2024/(1345 to 1412) GMT
24-10-2024/(1915 to 1942) IST



RADAR OBSERVATIONS (MAX_Z) OF DWR PARADIP

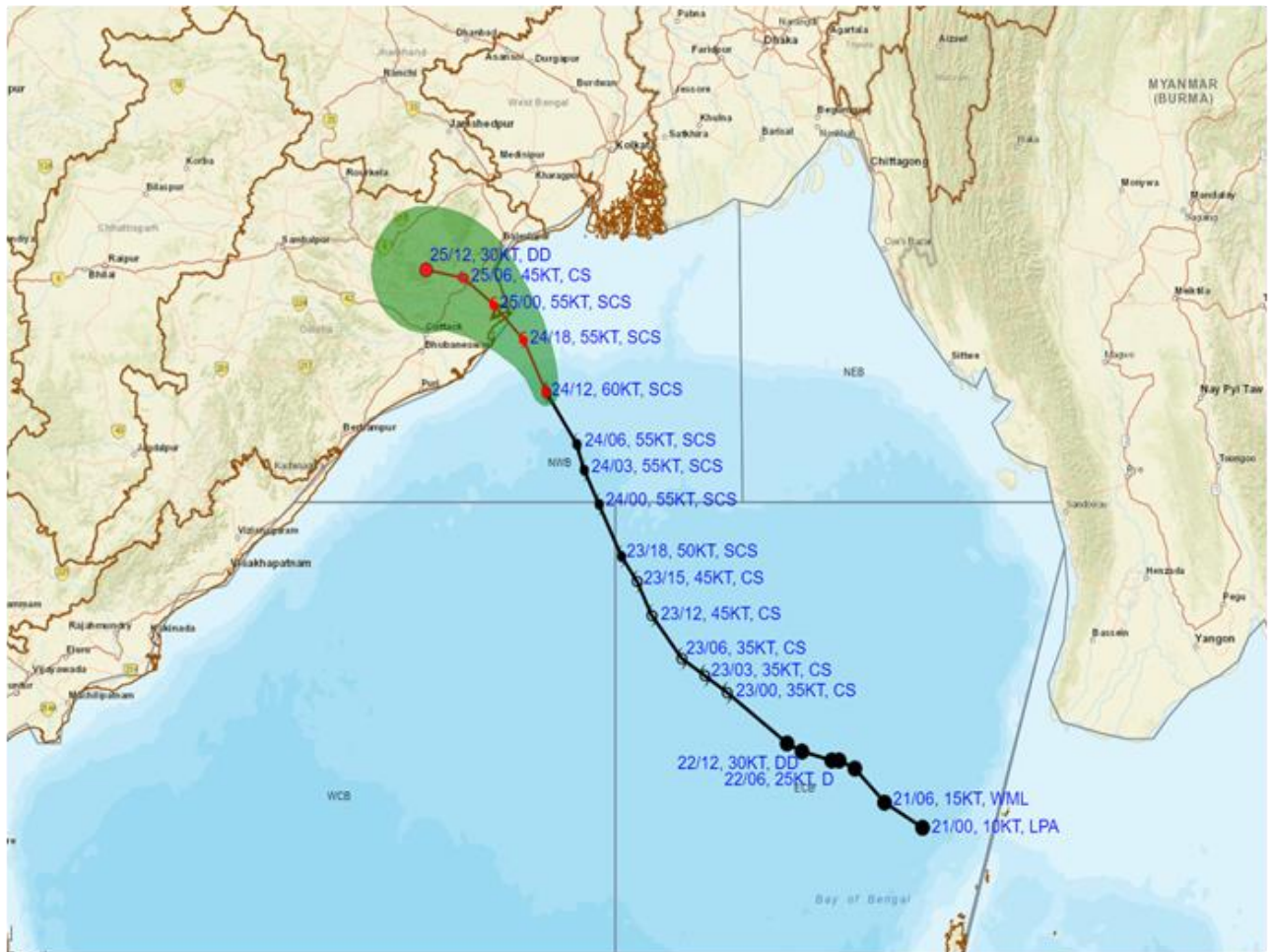


RADAR OBSERVATIONS (MAX_Z) OF DWR GOPALPUR





OBSERVED AND FORECAST TRACK ALONGWITH CONE OF UNCERTAINTY OF SEVERE CYCLONIC STORM 'DANA' OVER NORTHWEST BAY OF BENGAL BASED ON 1200 UTC (1730 Hrs. IST) OF 24th OCTOBER 2024



DATE/TIME : IN UTC
 IST : UTC + 0530
 KT : NAUTICAL MILE/HOUR = 1.85 KM/HOUR
 LPA : LOW PRESSURE AREA
 WML : WELL MARKED LOW PRESSURE AREA
 D : DEPRESSION (17-27 KT)
 DD : DEEP DEPRESSION (28-33 KT)
 CS : CYCLONIC STORM (34-47 KT)
 SCS : SEVERE CYCLONIC STORM (48-63 KT)
 VSCS : VERY SEVERE CYCLONIC STORM (64-89 KT)
 ESCS : EXTREMELY SEVERE CYCLONIC STORM (90-119 KT)
 SuCS : SUPER CYCLONIC STORM (≥ 120 KT)

LESS THAN 34 KT
 34-47 KT
 ≥ 48 KT
 OBSERVED TRACK
 FORECAST TRACK
 CONE OF UNCERTAINTY

| Forecast | DISTANCE (KM) AND DIRECTION FROM STATIONS | | |
|---------------------|---|----------|--------------|
| Date and Time (UTC) | PARADIP (CWR) | DHAMARA | SAGAR ISLAND |
| 24.10.24/1200 | 100, ESE | 130, SSE | 210, SSW |
| 25.10.24/1200 | 130, NW | 110, WNW | 230, WSW |